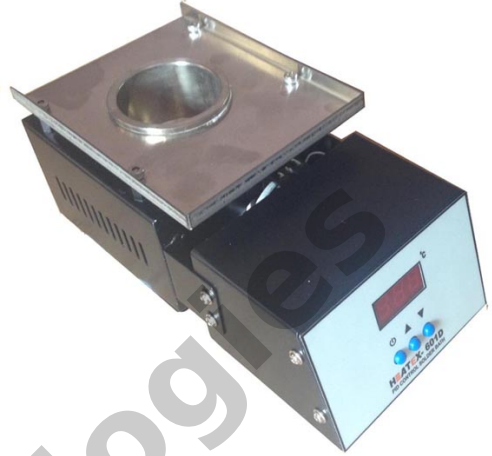


PID Digital Solder Pot

Product Name:	PID Digital Solder Pot
Brand:	HEATEX
Model:	601D
Category:	DIGITAL SOLDER POTS



System Includes	Features	Specifications
<ul style="list-style-type: none"> • Microprocessor based power control unit with Stianless steel 50/40mm pot • Power cord 	<ul style="list-style-type: none"> • Temp Control for accurate and precise temperature • Bright display for clear visibility • Auto tune systems control • Closed loop temperature control • Soft On/Off Power switch • Modular and compact design, ESD SAFE by design • Quality tips for long life • Easy to use, easy maintenance, good heat effect, melting tin fast. • The unit is digitally calibrated through advanced software. • High power heater, quickly melten the lead-free tin bar. 	<ul style="list-style-type: none"> • Input Voltage : 250W , 230V AC $\pm 10\%$ 50Hz • Temp Range :150-450°C • Temp stability : +/- 1 °C • Bath Capacity : Upto 1 Kg. approx. • Mechanical Dimensions • Pot dimensions : 50Dia x 40mm Depth Stainless steel A grade • Weight: 300grms.