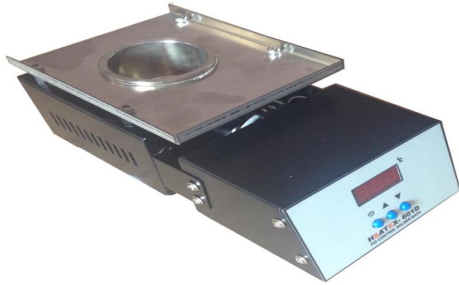


PID Digital Solder Pot

Brand: **HEATEX** | Model: **601D**

HEATEX



- Input Voltage : 250W , 230V AC \pm 10% 50Hz
- Temp Range :150-450°C
- Temp stability : +/- 1 °C
- Bath Capacity : Upto 1 Kg. approx.
- Mechanical Dimensions
- Pot dimensions : 50Dia x 40mm Depth Stainless steel A grade
- Weight: 300grms.

:: System Includes

- Microprocessor based power control unit with Stianless steel 50/40mm pot
- Power cord

:: Features

- Temp Control for accurate and precise temperature
- Bright display for clear visibility
- Auto tune systems control
- Closed loop temperature control
- Soft On/Off Power switch
- Modular and compact design,,ESD SAFE by design
- Quality tips for long life
- Easy to use, easy maintenance, good heat effect, melting tin fast.
- The unit is digitally calibrated through advanced software.
- High power heater,quickly melten the lead-free tin bar.